



*You Want It, We Have It*

LAMINATE | VINYL | PARQUET | DECK

A large, high-resolution image of a wood floor with a herringbone pattern, showing natural wood grain and knots. The image is framed by a thick, light orange border.

# FLOORING CATALOG

2018-2020 SELECTION

#1





# FLOOVER

Floover provides products for both domestic and commercial use, always using new technologies and creating solutions demanded by the market. The extensive collection of designs can be installed in any space, including wet areas like bathrooms or terraces. Floover is the ultimate solution to your project.



Floover Loose Lay Antiskid consists of 4 layers. The top layer is a resistant transparent PVC. This adapts perfectly to the elasticity of the vinyl below creating a nice walking surface. The third layer is made with 100% PVC and fiberglass that gives a great comfort and stability. Finally it has a special antiskid underlayment that increases also the stability of the system.

# TECHNICAL DATA



1. Layer of transparent PVC 0.5mm
2. Printed Decor
3. Core layer PVC reinforced with fiberglass
4. Backing PVC with micro antiskid



Microbevel 4 sides

## **Suction pad system** **ANTISKID underlayment**



Characteristics	Test	Loose Lay Antiskid
Classification	EN 16511	23/33
Dimensions	EN 427	1220 mm x 228 mm
Thickness	EN 430	5 mm
Weight	EN 430	9.95 kg/m <sup>2</sup>
Abrasion Resistance	EN 660-2: 99	≥ 0.015 gr / 1000r
Chemical Resistance	EN 438	Class 0
Fire Resistance	EN 13501-1	Class BFLs1 (B1)
Dimensional Stability	EN 434	-0.12%
Curving	EN 434	0.5 mm
Acoustic Certification	EN ISO 717-2	ΔLw = 15 dB
Cigarette burn resistance	EN 438-2	Class 3
Flexibility	EN 435	20 mm
Slip/Slide resistance	EN 13893	DS Grade
Formaldehyde emission	EN 717	E1
UV Resistance	ISO 105	≥ Grade 6
Castor Chair	EN 425	Suitable for type W
Antistatic Performance	EN 1815	< 2 kv
Residual Indentaion	EN 433	max 0.10 mm
Water Resistance	EN 317	0% Swelling



Slip Resistant



Fire Resistant



Ecological



Abrasion Resistant



Antistatic



Chemical Resistant



Silent



UV Ray Resistant



Impact Resistant



Waterproof



# COLOR SELECTION

RECTANGULAR PLANKS (228MM X 1220MM X 5MM / 4MM)



LL1011  
CEMENT GREY



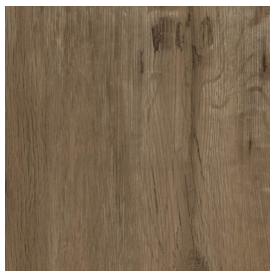
LL1022  
MISTY GREY



LL1033  
WINTER PINE



LL1044  
GRAINY OAK



LL1055  
CREAM PINE



LL1066  
SCOTTISH OAK



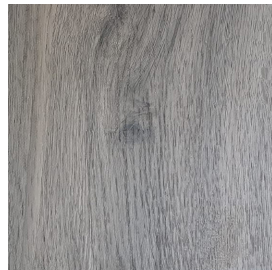
LL1077  
SOLID CONCRETE



LL1088  
BELGIUM OAK



LL1099  
OAK TREE

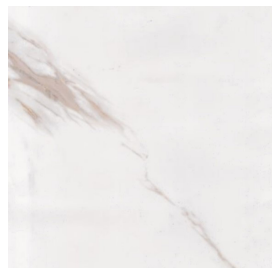


LL4011  
UMBER OAK

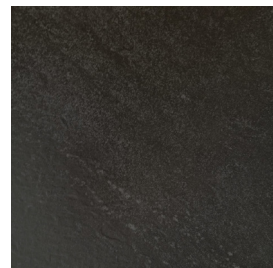
JUMBO SQUARE TILES (914.4MM X 914.4MM X 4MM)



LL5011  
PEARLY GREY



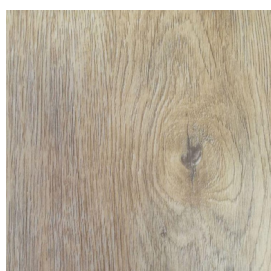
LL5033  
D'ORO MARBLE



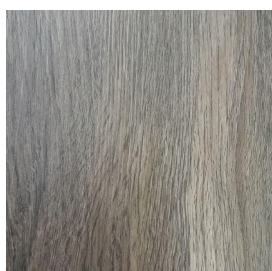
LL5088  
CRYSTAL BLACK



MINI LOOSE LAY (122MM X 610MM X 5MM)  
WEAR LAYER 0.5MM)



MLL6011  
ROYCE OAK



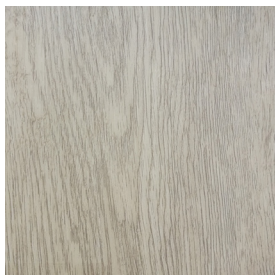
MLL6022  
LAZIO OLIVE



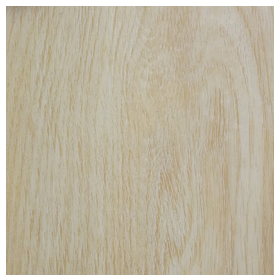


# FLOOVER DRY BACK

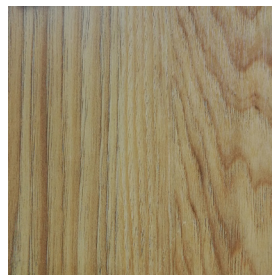
RECTANGULAR PLANKS (228MM X 1220MM X 3MM)  
WEAR LAYER 0.55MM



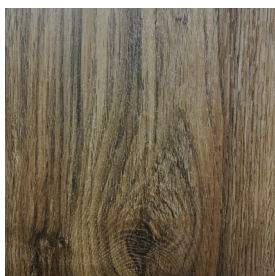
DB 3011  
VINTAGE PINE



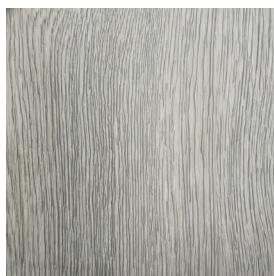
DB 3022  
CREAM LATTE



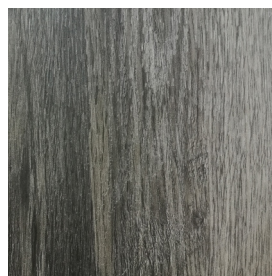
DB 3033  
OAK HOUSE



DB 3044  
FOREST WOOD



DB 3055  
ESKIMO GREY



DB 3066  
HARVEST NIGHT





# TECHNICAL DATA

- ① Layer of transparent PVC  
· 0,3 mm  
· 0,55 mm
- ② Decor
- ③ Vinyl



Characteristics		Test	Dry Back
Dimensions		EN 427	228 x 1220 mm
Length (12"≤n≤24")		EN 427	±0.30 mm
Length (36"≤n≤48")		EN 427	±0.50 mm
Width (4"≤n≤9")		EN 427	±0.10 mm
Squareness		EN 427	≤0.25 mm
Straightness		EN 427	≤0.25 mm
Gap Distance		EN 427	≤0.20 mm
Thickness Overall		EN 428	+0.13mm / -0.10mm
Height Difference		-	≤0.15mm
Scratches Damage, Imprint, Pin hole, Spots, Surface Contamination, Bubble, Bright Spot; Defects at the edge and point, Middle/Bottom Layer Exposing, White Edge on Surface, Fold, Delaminating, Shine Uneven		GB4085-83	Not allowed
Color Mismatching		GB4085-83	Same batch, no more than 2 colors
Embossing in register mismatching		GB4085-83	≤2mm
Stability	Contractibility (80°C)	EN 434	≤0.12%
	Curling (80°C)		≤1.20mm
Layer Strength		EN 431	≥50N
Gloss		-	±1°
UV Coating Adhesion		-	100%
Scratch Resistance		-	≥2500g
Abrasion Resistance		EN 660-2	≤0.015g/1000r or class T
Castor Chair Resistance		EN 425	no effect
Chemical Resistance		EN 423	class 0
Mark		EN 433	≤0.10mm
Toxic Element Test		EN71-3/ASTM F963-07	pass
Color Fastness		ISO 105 B02	≥class 6
Formaldehyde emission		EN717-1	Class E1
Flammability		EN13501-1	Blf-S1





# FLOOVER WOVEN VINYL

Woven is a vinyl fabric especially designed for both indoor and outdoor use. Exclusive designs which help to achieve a modern touch. Easy to maintain, waterproof, heat and UV resistant. The woven fabric has variations in tone depending on the light, giving added value and highlighting its beauty, resulting in an optical effect.

The feeling of the textile is unmistakable, practically organic but the flooring, nevertheless, has all the advantages of vinyl; wear-resistant, easy to handle compared to textile floorings and simple to install. The elasticity and acoustic insulation of its structure give this product great qualities of underfoot comfort.

## **OUTDOOR**

**SWIMMING POOLS  
VERANDAS  
PATIOS**

## **INDOOR**

**CORRIDORS  
RETAIL SHOPS  
ROOMS**

## **WET & DRY AREAS**

**BATHROOMS  
KITCHENS  
RESTAURANTS  
HOTELS  
GYMS**

## **OTHERS**

**FURNITURE  
WALL COVERING  
RUGS  
WORKTOPS**

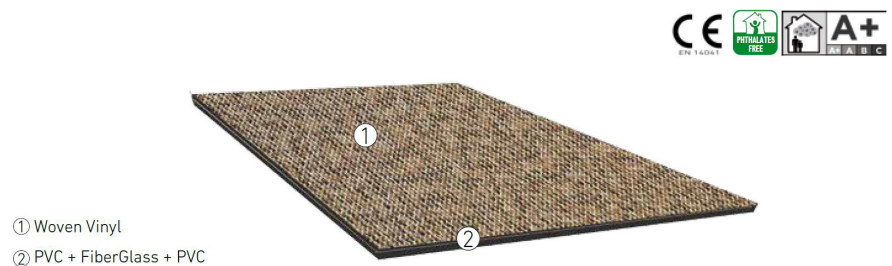


# TECHNICAL DATA

Floover Woven Glue Down is available in sheets or rolls for glue down. The top is a textile layer composed of a core of polyester and fiberglass, encapsulated in vinyl to reinforce the resistance and wear. It has the feeling of the textile and all advantages of vinyl: wear-resistant, easy to handle compared to textile floorings and simple to install.



Floover Woven Loose Lay have a backing of PVC and fiberglass with a total thickness of 4.2mm and is made in tiles of 500x500 mm.



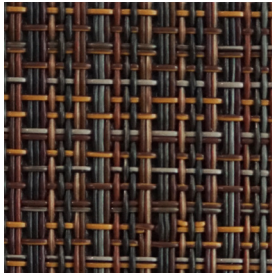
Characteristics	Test	Glue Down Rolls	Glue Down Tiles	Loose Lay
Classification	EN 685	23/33	23/33	23/33
Dimensions	EN 427	2 x 10 m	500 x 500 mm	500 x 500 mm
Thickness	EN 430	2.5 mm	3 mm	4.2 mm
Weight	EN 430	3.25 kg/m <sup>2</sup>	4 kg/m <sup>2</sup>	5.50 kg/m <sup>2</sup>
Abrasion resistance	EN 660-1: 99	0.068 mm	0.068 mm	0.068 mm
	EN 660-2: 99	1.80 mm <sup>3</sup>	1.80 mm <sup>3</sup>	1.80 mm <sup>3</sup>
Chemical resistance	EN 423	Class 0	Class 0	Class 0
Fire resistance	EN 13501-1	Class BFLs (B1)	Class BFLs (B1)	Class BFLs (B1)
UV resistance	ISO 105	≥ Grade 8	≥ Grade 8	≥ Grade 8
Thermal resistance	EN 12664	0.080 m <sup>2</sup> K/W	0.080 m <sup>2</sup> K/W	0.080 m <sup>2</sup> K/W
Fungus test	ASTM G21:96	Grade 1	Grade 1	Grade 1
Skew and Bow	EN 427	Max 3%	Max 3%	Max 3%
Slip resistance	EN 12633	Class 2	Class 2	Class 2
Residual Indentation	EN 433:1994	0.08 mm	0.08 mm	0.08 mm
Dimensional Stability	EN 434:1994	0.05% (X + Y direction)	0.05% (X + Y direction)	0.05% (X + Y direction)
Curling	EN 434:1994	1.5 mm	1.5 mm	1.5 mm
Assessment of Static Electrical Propensity I	SO1815:1997	1.2 kV	1.2 kV	1.2 kV
Acoustics Performance	ISO 140-9:1997	Lw = 12 dB; Cl = -9 dB	Lw = 12 dB; Cl = -9 dB	Lw = 12 dB; Cl = -9 dB
Castor chairs suitability	EN 425:2002	No effect	No effect	No effect



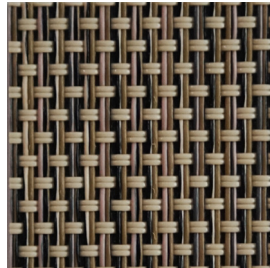
Note: Being a textile produce, this rang has a tolerance of 2% asymmetry, known as skew and bow effect. Maximum fraying tolerance of 5 inner-yarns/ml guaranteed. It has all the textile properties and these may suffer variations or changes with time that may affect and alter the colour.

# COLOR SELECTION

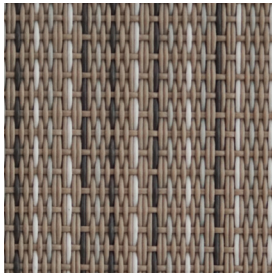
## WOVEN INTEGRATE



LLWV4007  
SPICE



LLWV4008  
BOLD BEIGE



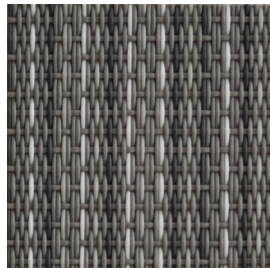
LLWV4018  
ECRU HEM



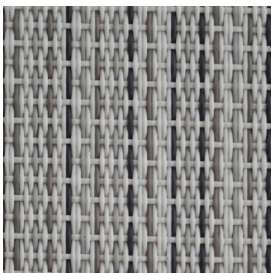
LLWV4010  
REFLECTION



LLWV4006  
TRANQUILITY



LLWV4019  
GREY STITCH



LLWV4017  
WHITE STITCH





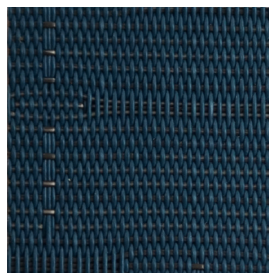




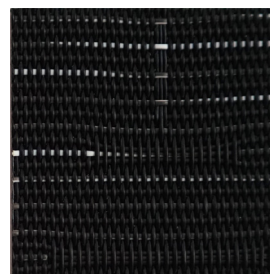
WV5501  
BAMBOO 50



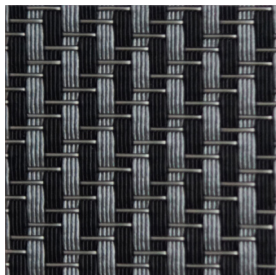
WV5502  
BAMBOO 50



WV5504  
BAMBOO 50



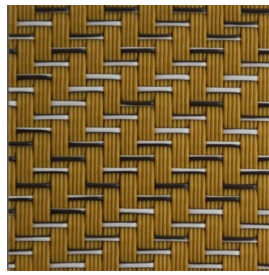
WV5505  
BAMBOO 50



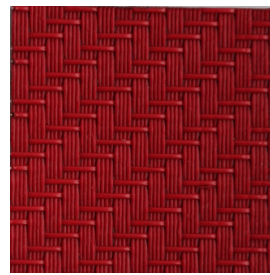
WV5701  
SISAL 70



WV5702  
SISAL 70



WV5703  
SISAL 70



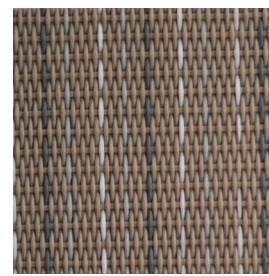
WV5704  
SISAL 70



WV5705  
SISAL 70



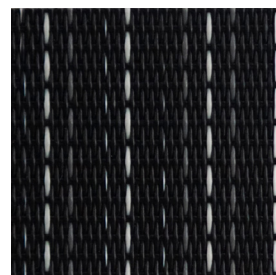
WV5K01  
STREAKY K0



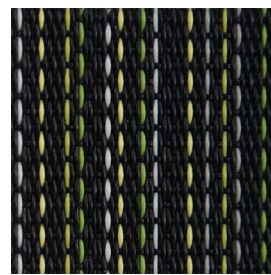
WV5K02  
STREAKY K0



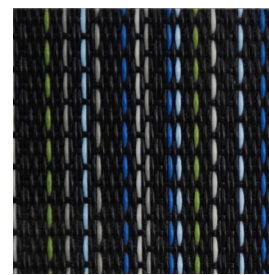
WV5K03  
STREAKY K0



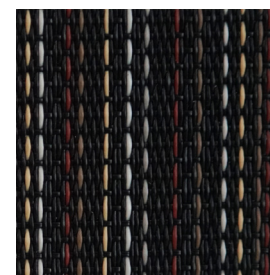
WV5K04  
STREAKY K0



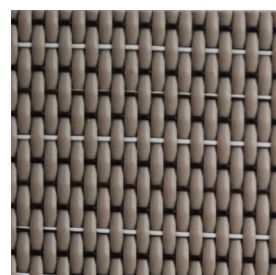
WV5K05  
STREAKY K0



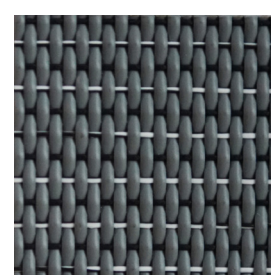
WV5K06  
STREAKY K0



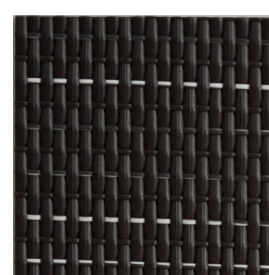
WV5K07  
STREAKY K0



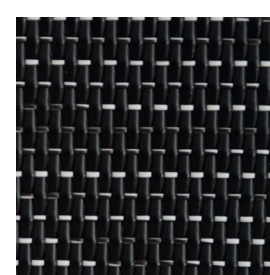
WV5E01  
ELLIPSE E0  
U1 FLOOR



WV5E02  
ELLIPSE E0

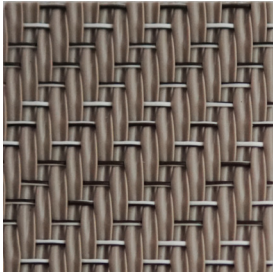


WV5E03  
ELLIPSE E0



WV5E04  
ELLIPSE E0

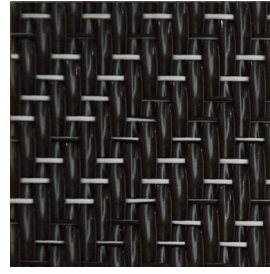




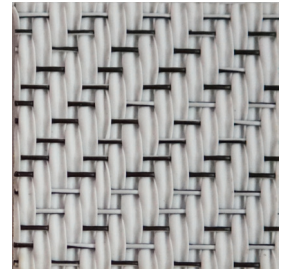
WV5S01  
INFINITY S0



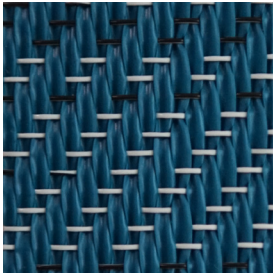
WV5S02  
INFINITY S0



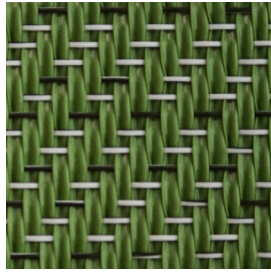
WV5S03  
INFINITY S0



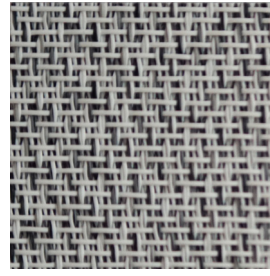
WV5S04  
INFINITY S0



WV5S05  
INFINITY S0



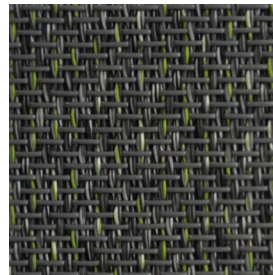
WV5S06  
INFINITY S0



WV5T01  
GRANITE T0



WV5T02  
GRANITE T0



WV5T03  
GRANITE T0



WV5T04  
GRANITE T0



WV5T05  
GRANITE T0



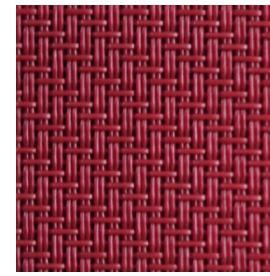
WV5T06  
GRANITE T0



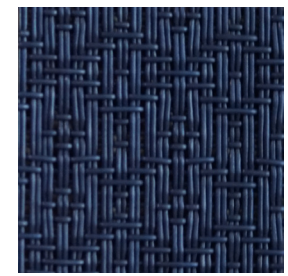
WV5Q01  
QUILT Q0



WV5Q02  
QUILT Q0



WV5Q03  
QUILT Q0



WV5Q04  
QUILT Q0



WV5Q05  
QUILT Q0

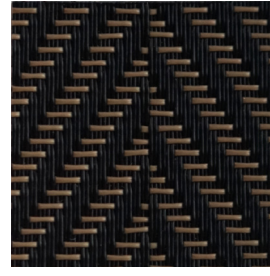




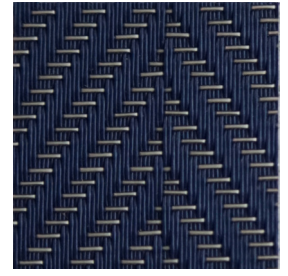
WV2601  
HERRINGBONE 60



WV2602  
HERRINGBONE 60



WV2603  
HERRINGBONE 60



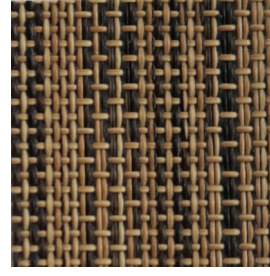
WV2604  
HERRINGBONE 60



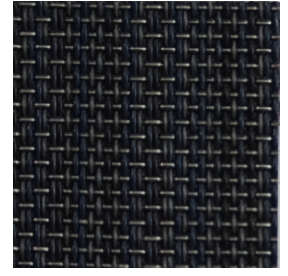
WV2605  
HERRINGBONE 60



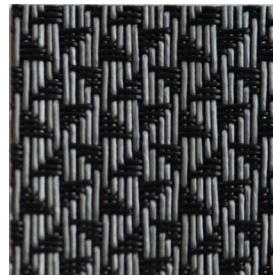
WV4001  
BOLD GREY



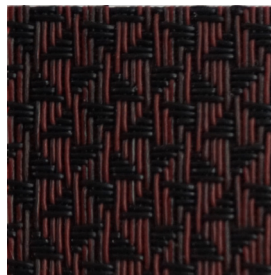
WV4002  
CALM BEIGE



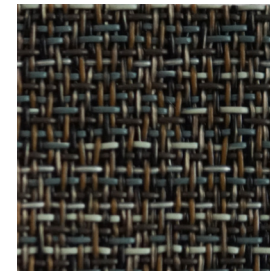
WV4003  
CALM BLUE



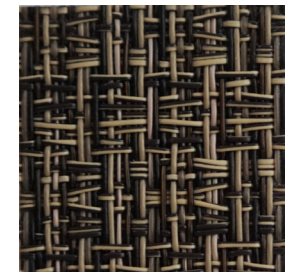
WV4004  
DIAMOND CUT GREY



WV4005  
DIAMOND CUT RED



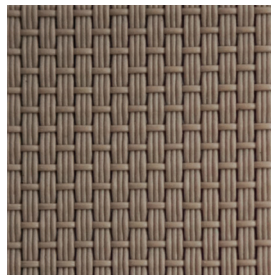
WV4009  
VITALITY



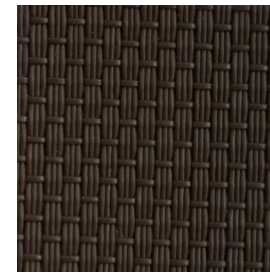
WV4011  
ZEST



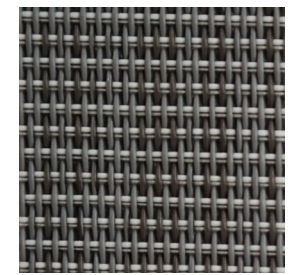
WV4012  
DIVINE



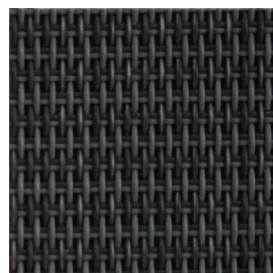
WV4020  
JAGGERY



WV4021  
RAPADURA

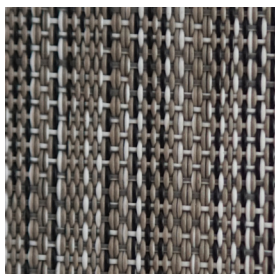


WV4022  
SILVER

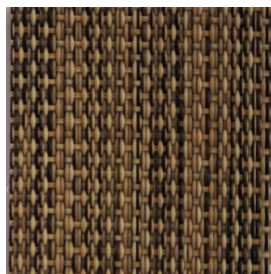


WV4023  
ALUMINIUM  
U1 FLOOR

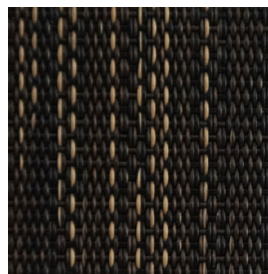




WV5101  
LINEN 10



WV5102  
LINEN 10



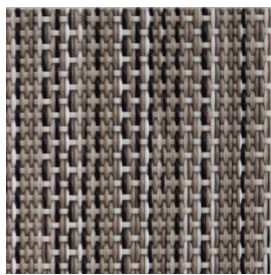
WV5103  
LINEN 10



WV5104  
LINEN 10



WV5105  
LINEN 10



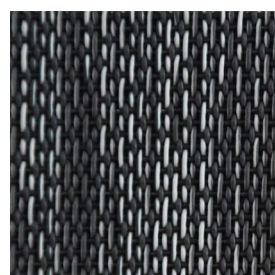
WV5106  
LINEN 10



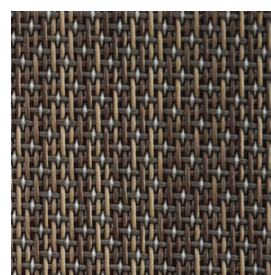
WV5107  
LINEN 10



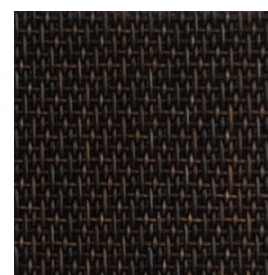
WV5108  
LINEN 10



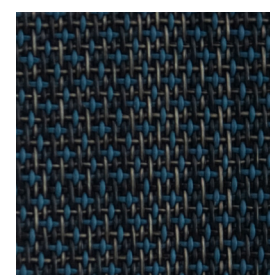
WV5201  
TWEILL 20



WV5202  
TWEILL 20



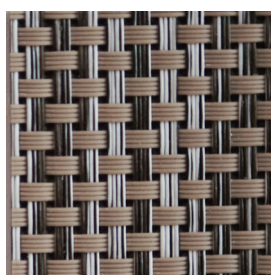
WV5203  
TWEILL 20



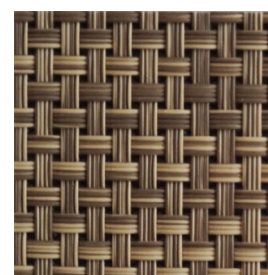
WV5204  
TWEILL 20



WV5205  
TWEILL 20



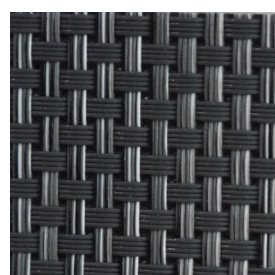
WV5301  
RATTAN 30



WV5302  
RATTAN 30



WV5303  
RATTAN 30



WV5304  
RATTAN 30



WV5305  
RATTAN 30



WV5306  
RATTAN 30



WV5307  
RATTAN 30  
U1 FLOOR | 15



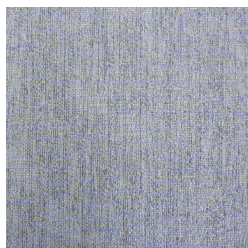
# FLOOVER WOVEN JACQUARD (SPAIN)

WOVEN WALLS (30M X 1M, 1.6MM THICKNESS)

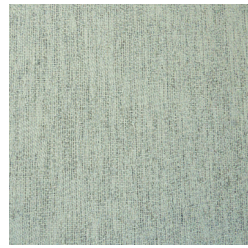
WOVEN LOOSE LAY (5M X 5M, 3.2MM THICKNESS)



WJ0001



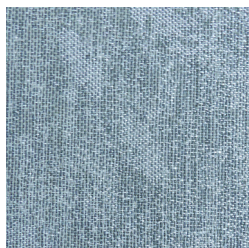
WJ0002



WJ0003



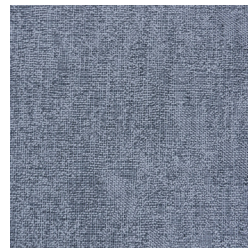
WJ0004



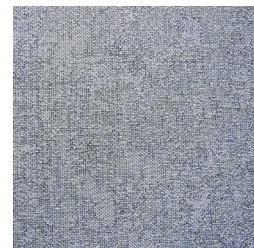
WJ0005



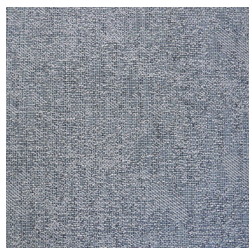
WJ0006



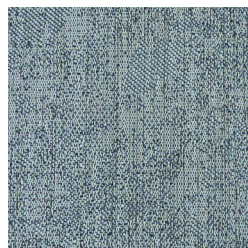
WJ0007



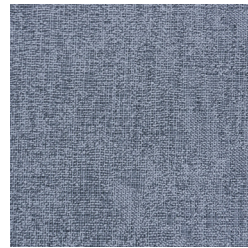
WJ0008



WJ0009



WJ0010



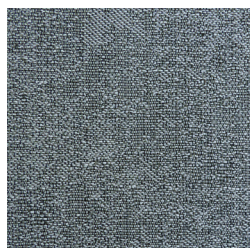
WJ0011



WJ0012



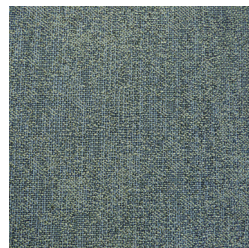




WJ0013



WJ0014



WJ0015



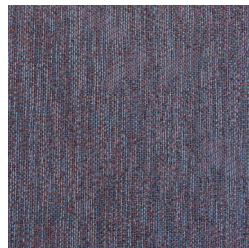
WJ0016



WJ0017



WJ0018



WJ0019



WJ0020



WJ0021



WJ0022



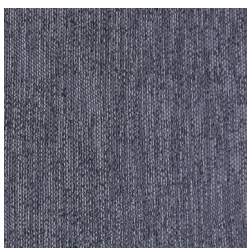
WJ0023



WJ0024



WJ0025



WJ0026

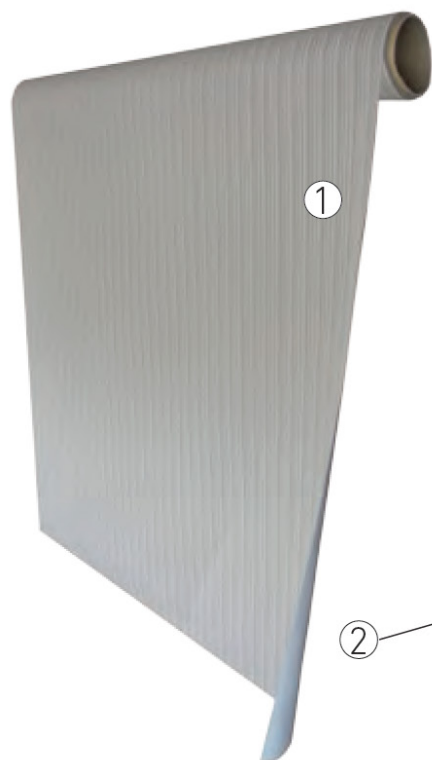


WJ0027





# TECHNICAL DATA (WOVEN WALLS)



① Woven Vinyl 90% PVC FR, 2% Polyester, 8% Glassfibery **1,3 mm**

② Polyester Backing: 100% Polyester **0,4 mm**

②



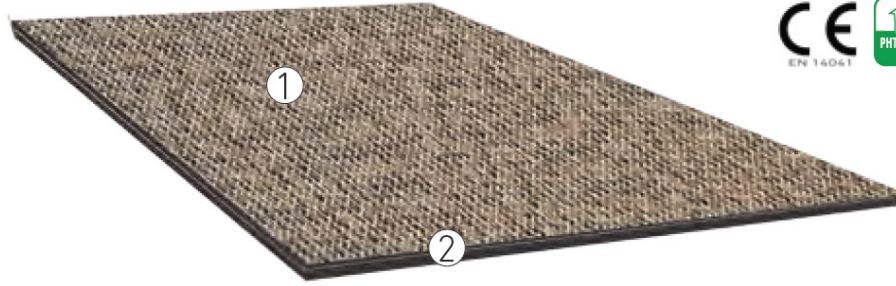
Characteristics	Test	Woven Walls
Roll width	-	1,00 m
Roll Length	-	30,00 m
Roll diameter	-	0,22/0,24 m
Thickness	-	1,60 mm
Weight	-	750 gr/m <sup>2</sup>
Chemical resistance	EN 423	Class 0
Fire resistance	EN 13501	B-S1 d0
Thermal resistance	EN 12667:2001	0,044 m2 K/W
UV resistance	ISO 105-B02	≥Grade 8
Fungus test	ASTM G21 96	Grade 1
Skew and Bow	EN 427	Max 2%
Dimensional Stability	EN 434:1994	0,05% (X + Y Direction)
Curling	EN 434:1994	1,5 mm
Release of Formaldehyde	-	Pass (120mg/kg)
Release of Vinyl Chloride	-	Monomer -Pass (<0.2mg/kg)
Sound Absorption		αw=0.05
Release of dangerous substances (SVHC)	Test Report: xXMCCM161101593	Pass



**NOTE:** Being a textile product, this range has a tolerance of 2% asymmetry, known as skew and bow effect. Maximum fraying tolerance of 5 inner-yarns/ml guaranteed. It has all the textile properties and these may suffer variations or changes with time that may affect and alter the colour.



# TECHNICAL DATA (WOVEN LOOSE LAY)



- ① Woven Vinyl
- ② PVC + FiberGlass + PVC

Characteristics	Test	Woven Loose Lay*
Classification	EN 685	23/33
Dimensions	EN 427	500 x 500 mm
Thickness	EN 430	4,2 mm
Weight	EN 430	5,50 kg/m <sup>2</sup>
Abrasion resistance	EN 660-1: 99	0,068 mm
	EN 660-2: 99	1,80 mm <sup>3</sup>
Chemical resistance	EN 423	Class 0
Fire resistance	EN 13501-1	Class BFLs1 (B1)
Thermal resistance	EN 12664	0,0639 m <sup>2</sup> K/W**
Formaldehyde emission	EN 717	E1
UV Resistance	ISO 105 - B02	> Grade 6
Fungus test	ASTM G21:96	Grade 1
Skew and Bow	EN 427	Max 2%
Slip/Slide resistance	EN 12633	Class 2
	DIN 51130	R10
Residual Indentation	EN 433:1994	0.08mm
Dimensional Stability	EN 434:1994	0.05% (X + Y direction)
Curling	EN 434:1994	1.5mm
Assessment of Static Electrical Propensity I	EN 1815	< 2 kV
Acoustics Performance	EN ISO 717-2	Lw=15dB Cl=-8dB
Castor chair suitability***	EN 985	Continuous use

Characteristics	Test	Woven Loose Lay (Jacquard decors)
Classification	EN 685	23/33
Dimensions	EN 427	500 x 500 mm
Thickness	EN 430	3,2 mm
Weight	EN 430	4,50 kg/m <sup>2</sup>
Fire resistance	EN 13501-1	Class BFLs1 (B1)
Light Fastness	ISO 105 - B02	> Grade 7
Slip resistance	EN 13893	< 0,3
Dimensional stability	EN 986	< 0,1%
Doming & curling	EN 986	meets the requirements
Antistatic	ISO 6356	< 2 kV
Acoustic performance	EN ISO 717-2	Lw=14dB
Castor chair suitability	EN 985	Intensive use

\* Recommended tiles fitting pattern: chessboard system

\*\* Suitable for underfloor heating system

\*\*\* Suitable for soft polyamide wheels (type W)

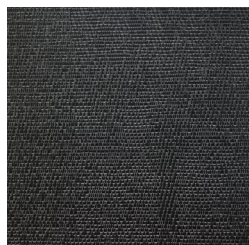


**NOTE:** Being a textile product, this range has a tolerance of 2% asymmetry, known as skew and bow effect. Maximum fraying tolerance of 5 inner-yarns/ml guaranteed. It has all the textile properties and these may suffer variations or changes with time that may affect and alter the colour.



# FLOOVER WOVEN JACQUARD (TAIWAN)

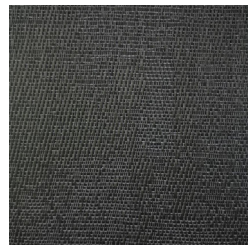
WOVEN ROLLS (2M X 2M)



GA2



GA4



GB2



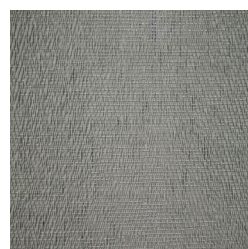
GB4



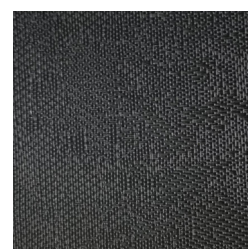
GC1



GC3



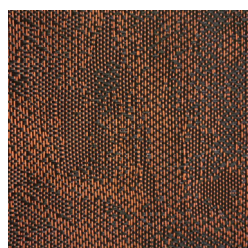
GD4



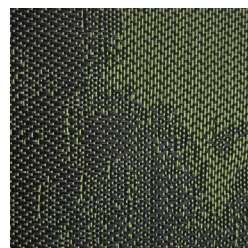
FA2



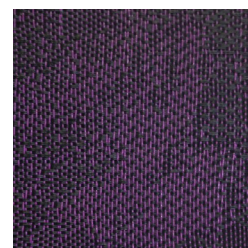
FA5



FA6



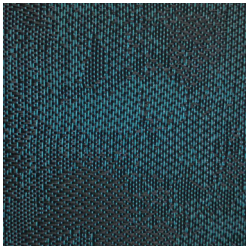
FA7



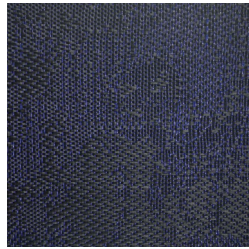
FA8



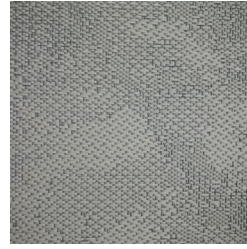




FA9



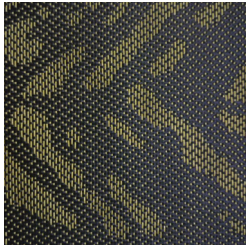
FA10



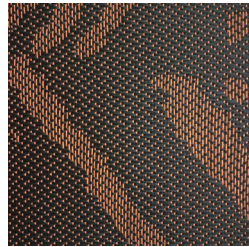
FD2



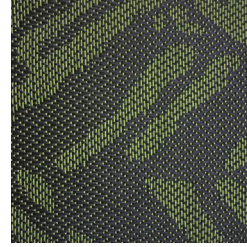
CA4



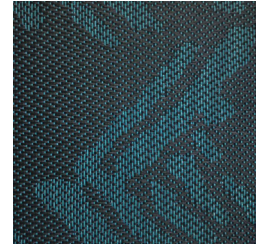
CA5



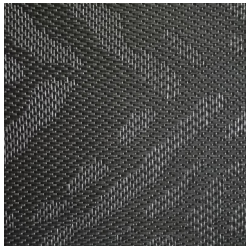
CA6



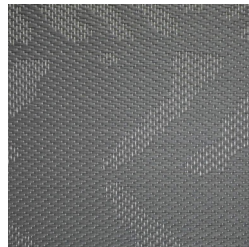
CA7



CA9



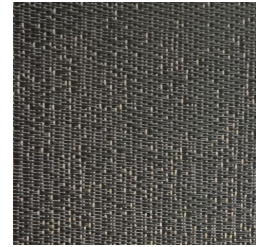
CB4



CC4



CD4



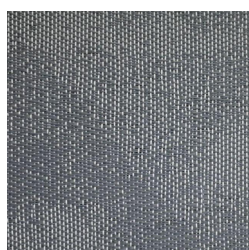
SH1



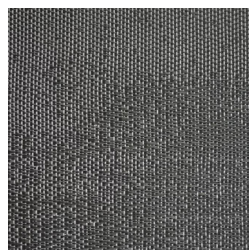




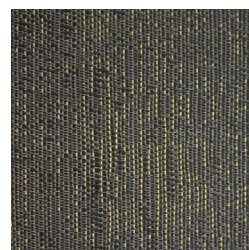
SH2



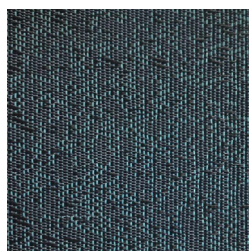
AD1



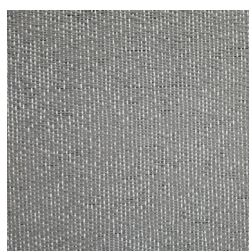
AD2



SA1



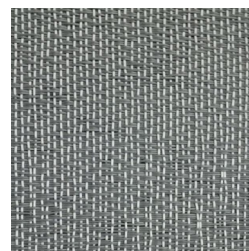
SA2



AR1



AR2



WA1



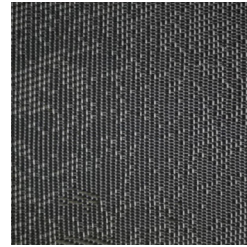




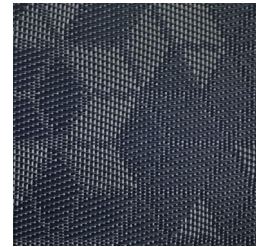
WA2



MA1



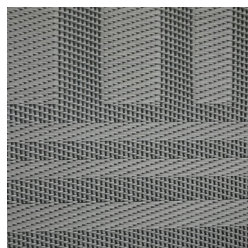
MA2



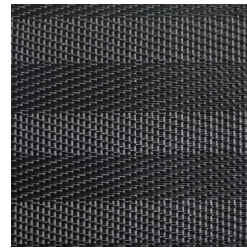
MO1



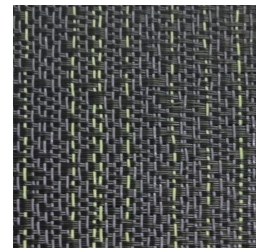
MO2



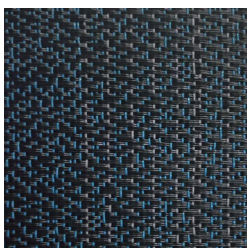
IL1



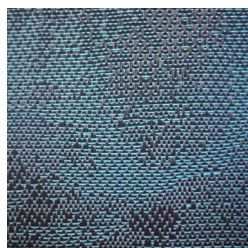
IL2



MY1



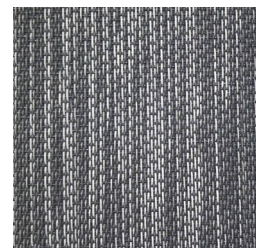
MY2



MY3



MY4



MY5



# FLOOVER WALL COVERING

Involving designers and architects this solution is part of the INTEGRATE strategy. Floover offers the possibility to unify and integrate all the surfaces and elements on a setup or project using the same design or pattern on the floor, walls, ceilings and furniture. It is all about choosing one of the Floover decors and apply them on the different solutions.

Floover Wallcovering products are for both domestic and commercial use. The solution is based on the new technologies and covers a need in the market. It is easy to install and specifically designed for high durability and longevity. All this is complemented with accessories one might need to complete any project.

It is possible to add or delete some elements of the composition and to change the colour gradation. The dimension of the single detail and the proportion of the whole design can be changed in the adjusting process.

## TECHNICAL DATA

### NON-WOVEN FABRIC ON SIDE COATED MATERIAL

Composition: Cellulose and synthetic fibres of polyester and viscose.

Installation: Paste the wall with wallpaper glue, i.e. Metylan "Henkel" or similar.

### EMBOSSED COATED VYNIL ON NON-WOVEN MATERIAL

Composition: Coated vinyl on non-woven

Installation: paste the wall with wallpaper glue, i.e. Metylan "Henkel" or similar.

### SILK NON-WOVEN FABRIC BACKED

Composition: 50% silk + 50% Fr-Trevira CS300 on non-woven material.

Installation: Paste the wall with wallpaper glue, i.e. MT32 "Mapei" or Metylan "Henkel" or similar.

### WOVEN VINYL TEXTILE

Composition: Woven Vinyl 90% PVC FR, 2% Polyester, 8% Glassfibery 1,3 mm + Polyester Backing: 100% Polyester 04 mm

Characteristics	Non-woven (Smooth)	Embossed coated non-woven	Silk non-woven	Woven vinyl textile
Weight	200 g/m <sup>2</sup>	350 g/m <sup>2</sup>	300-355 g/m <sup>2</sup>	750 g/m <sup>2</sup>
Thickness	0.6 mm	0.8 mm	0.8 mm	1.6 mm
Roll width	98 cm	68.5 cm	137 cm	98 cm
Roll length	300 cm	300 cm	300 cm	300 cm
Fire Resistance (EN 13501)	C-S1, d0	B-S2, d0	B-S1, d0	B-S1, d0
Chemical Resistance	-	-	-	Class 0
UV Resistance	Yes	Yes	Yes	≥ Grade 8 (ISO 105-B02)
Fungus test (ASTM G21 96)	-	-	-	Grade 1
Moisture Resistance	Yes	Yes	Yes	Yes
Antistatic, antibacterial	-	Yes	-	Yes
Shock Resistant	Yes	Yes	Yes	Yes
Crushproof	Yes	Yes	Yes	Yes
Heat Resistance	-	Yes	-	Yes
Skew and Bow (EN 427)	N/A	N/A	N/A	Max 2%



Contemporary design: A perfect fusion between classical and contemporary style, inspired by Nature's shapes, by strong colored Persian tiles, and by the delicate features of Japanese prints.



Integrate: The 12 subjects of the collection used for the decoration of the walls are harmonised with the same colour, texture and style of the floors. Furthermore, the wallpapers can be enriched with graphics part of the other collections in the catalogue creating a unique, original and customised proposal.



Fragments of the past: This collection takes its inspiration from the great masters of the past, who are, still today, considered real trendsetters and innovators in the art world. This Designer Wallpaper takes shape from the works of Piero della Francesca, Giovanni Battista Piranesi, Albrecht Dürer and Henri Rousseau.



Wonderful Country: An homage to the most evocative corners of the Bel Paese. From the prestigious Alinari Archives in Florence, we are proud to present 26 between the most fascinating historical photographs of Italian treasures, known and loved all over the world.







# LUXURY VINYL FLOORING

## TECHNICAL DATA

Description: Vinyl Click Flooring  
1220\*180\*4.2\*0.3mm, 0.3mm wear layer

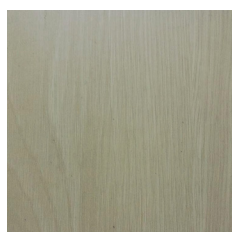
Item no.: NLS4011, NLS4051, NLS4104, NLS4192, NLS4219, NLS4362, NLS4621, NLS4691

Characteristics	Standards			
	EN	Result	ASTM	Results
Size	EN 427	Pass	ASTM F536	Pass
Overall Thickness	EN 428	Pass	ASTM F386	Pass
Wear Layer Thickness	EN 429	Pass	ASTM F410	Pass
Dimension Squareness and Straightness	EN 427	Pass Squareness 0.18mm Straightness 0.07mm		
Chemical Resistance	EN 423	Pass	ASTM F925 ASTM F1344	Pass
Colour Fastness to Artificial Light	EN 20105:B02 Method A	Pass, ≥Grade 6	ASTM F1515	Pass
Heat Stability by Color Change			ASTM F1514	Pass
Castor Chair Suitability	EN 425	Pass		
Residual Indentation	EN 423	Pass, 0.06mm	ASTM F1914 ASTM F970	Pass
Abrasion Group	EN660-12	Group T	ASTM F510 ASTM D3384	Pass
Impact Resistance			ASTM F1265 ASTM D2632	Pass
Dimensional Stability	EN434	Pass	ASTM F2199	Pass, 0.1%
Sound Reduction	EN ISO717-2(ΔLw)	2 dB		
Flexibility	EN 435 Method A	Pass	ASTM F137	Pass
Dip Resistance	EN 13893	Class D5	ASTM D2047-93	Pass
Electrical Resistance	EN 1081 Method C	Pass	ASTM F150-06	Pass
Thermal Resistance	EN 12663	Pass		
Toxic Element Test	EN 71-3	Pass, Not toxic. Does not contain heavy metal and formaldehyde		
Behavior to Fire	EN ISO11925-2 EN 13501-1 EN ISO 9239-1	Bf1-S1	ASTM E648-06	Pass / Class 1
Smoke Density			ASTM E662	Pass, <450

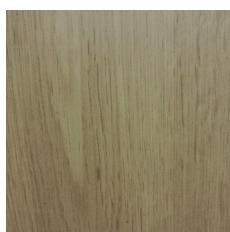




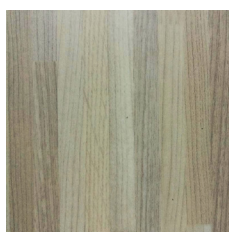
## COLOR SELECTION



NLS4051  
NORDIC ASH



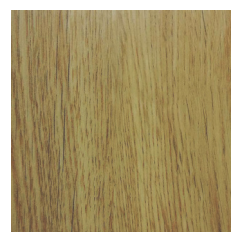
NLS4011  
LATTE ELM



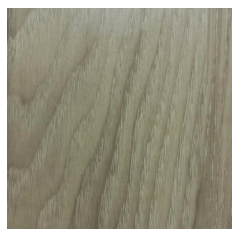
NLS4710  
PINE LINE



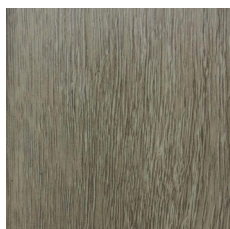
NLS4181  
EURO OAK



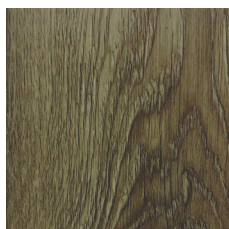
NLS4691  
GOLDEN TEAK



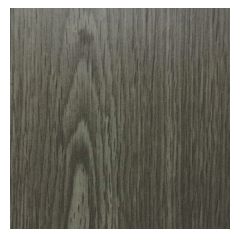
NLS4192  
OAK WHITE WASH



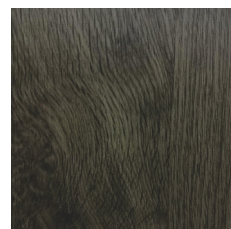
NLS4219  
GREY OAK



NLS4621  
RICH CHESTNUT



NLS4104  
OLIVE GREY



NLS4362  
EBONY WALNUT

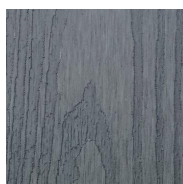
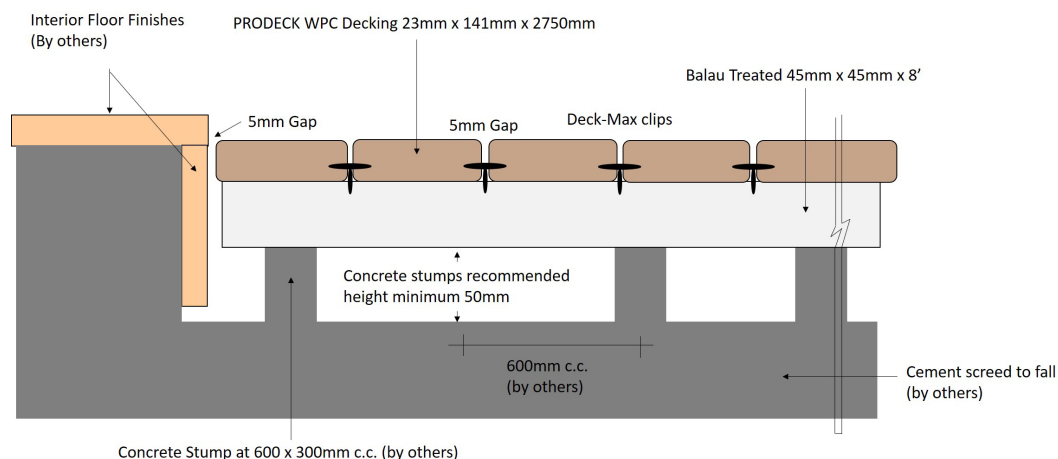
Nature  LIVING



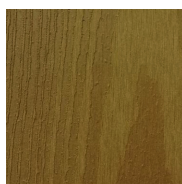
# COMPOSITE DECKING

PRODECK co extrusion decking is a capped wood plastic composite, which means it has an advanced premium shield encasing all four sides around its inner core. The shield and core are extruded together under a very high temperature mold simultaneously, so there are no adhesives or chemicals that are harmful to the environment.

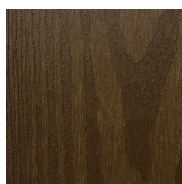
## TECHNICAL STRUCTURE



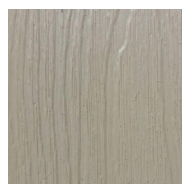
CEMENT  
GREY



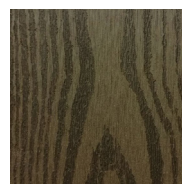
TEAK



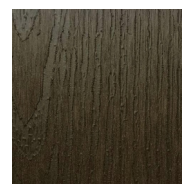
REDWOOD



WHITE  
PINE



WALNUT



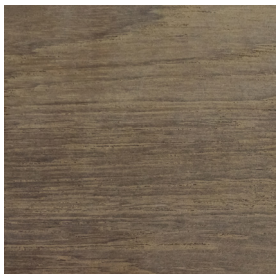
DARK  
WALNUT (PU)







## SOLID TIMBER



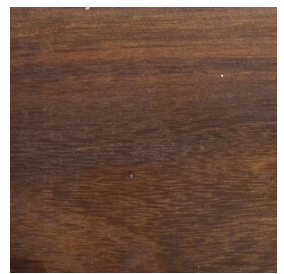
BURMESE TEAK



MERBAU



CHENGAL



IRONWOOD



# REMASTERED ENGINEERED TIMBER (RMET)



OAK



WALNUT



TEAK



WIREBRUSHED  
UNFINISHED



UNFINISHED





TO BE CONTINUED



U1 FLOOR PTE LTD  
ADDRESS: 2 YISHUN INDUSTRIAL STREET 1 #05-20, NORTHPOINT BIZHUB,  
SINGAPORE 768159  
TEL: 6208 0135 / 62080136 FAX: 6208 0137  
WEBSITE: [WWW.U1FLOOR.COM](http://WWW.U1FLOOR.COM)  
EMAIL: [U1fLOOR@GMAIL.COM](mailto:U1fLOOR@GMAIL.COM) / [SALESU1fLOOR@GMAIL.COM](mailto:SALESU1fLOOR@GMAIL.COM)